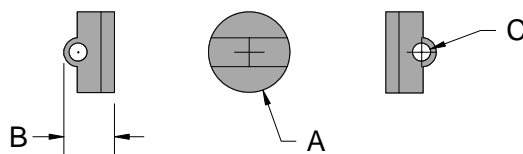




LEAD SEAL - CROSS-HOLE Data Sheet



The **LS31F** Cross-hole Lead Seal is designed so that the lashed wire is crimped together when the seal is compressed with the sealing tool. The effect of crimping the lashed wire together alleviates any chance of twisting the wire out of the hole without leaving clear evidence of tampering. To optimize security the sealing tool dies can be engraved to emboss or deboss characters/numbers/logo onto the seal so giving reference to the application user.

Technical Data

Recommended Applications

Gas, Water & Electric meters, Drums, Valves, Airline
Baggage Pods, Containers, Rail freight, Refineries,
Post Bags, Cages, Lockers

Material

99.9% Refined Lead

Marking

Plain or Company name/logo embossed or debossed
using sealing tool with engraved dies.

Sealing Tool

YPL 9062 supplied with plain 10mm dies as standard

Reference	Sizes in mm	LS31F
A	Diameter	11
B	Thickness	5.6
C	Hole size	2.0

Packaging

Standard Packaging : 1,000 seals/carton
Carton Dimensions : 14cm x 19cm x 7cm
Carton weight : 2.5kg/carton